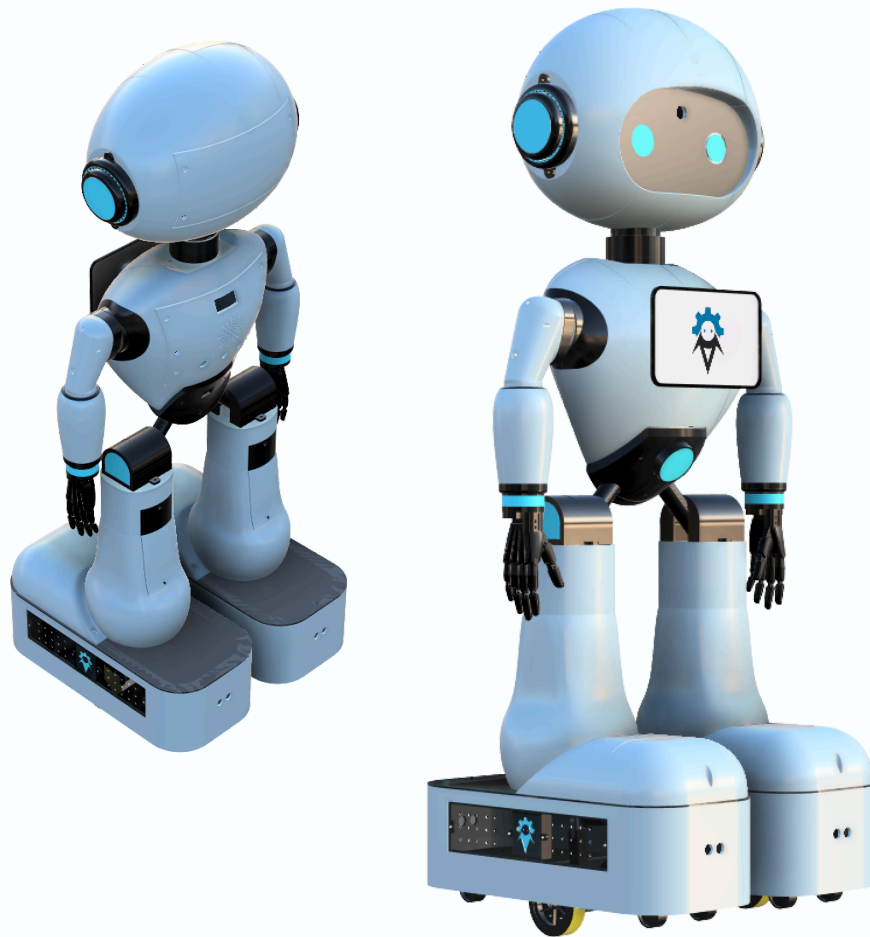


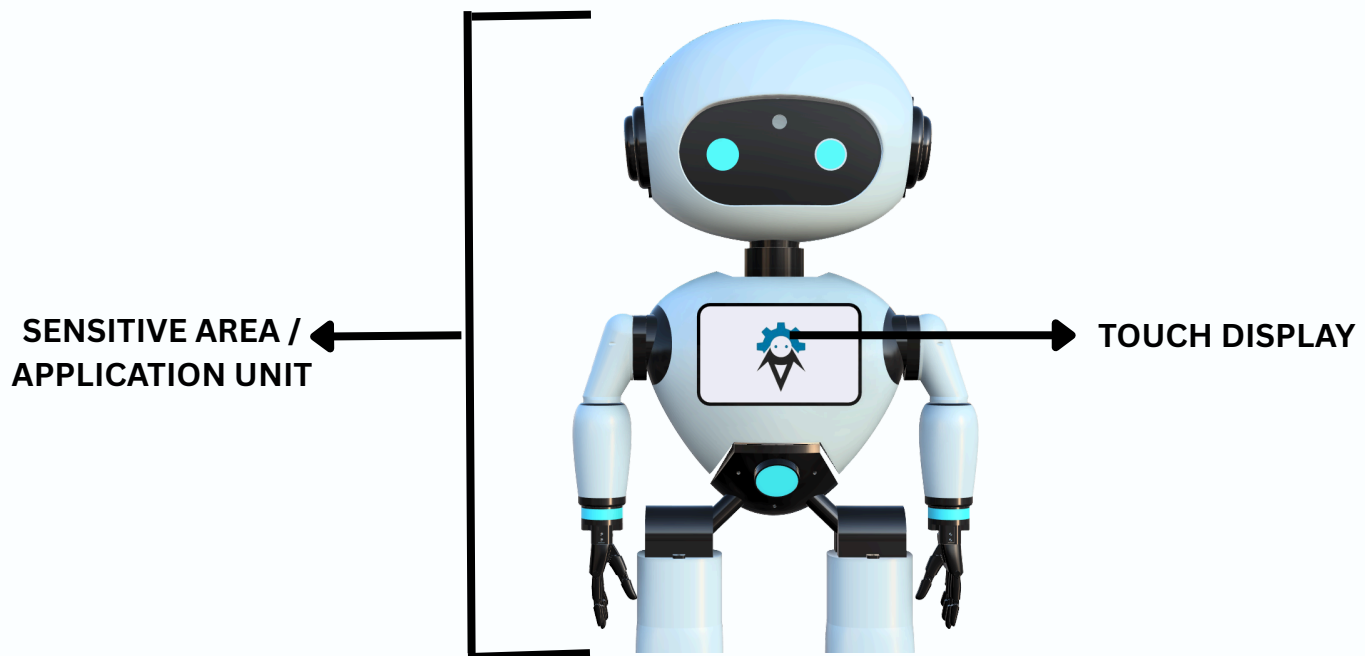
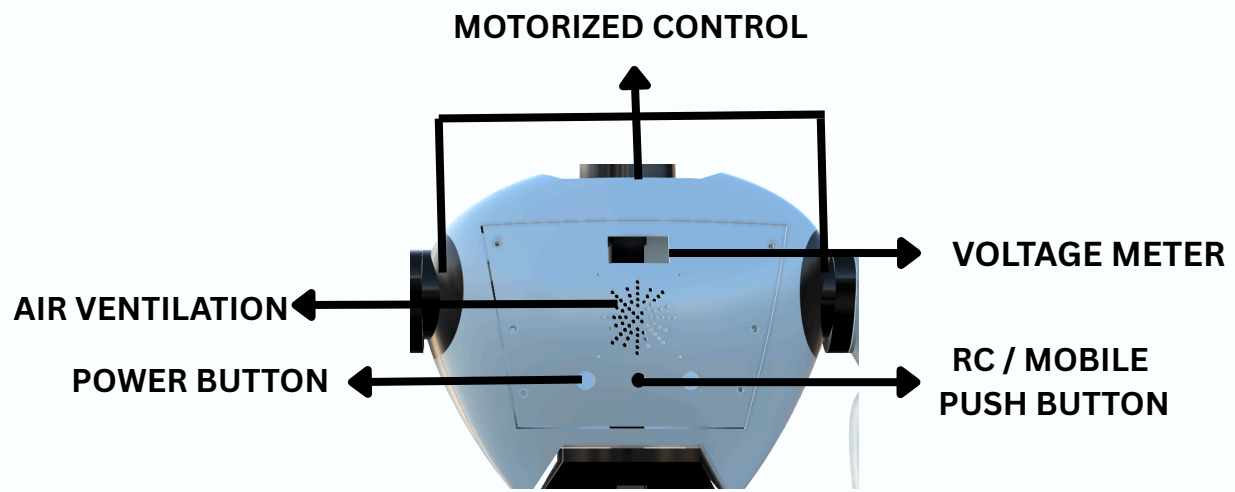


ROBOMIRACLE

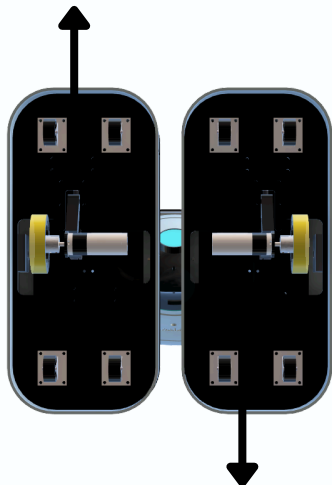
Gyaan



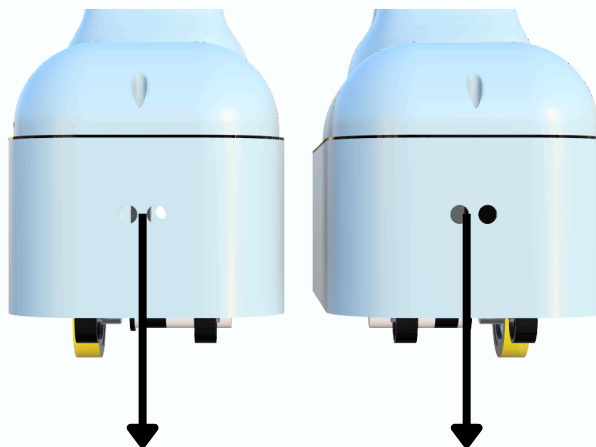
www.robomiracle.com



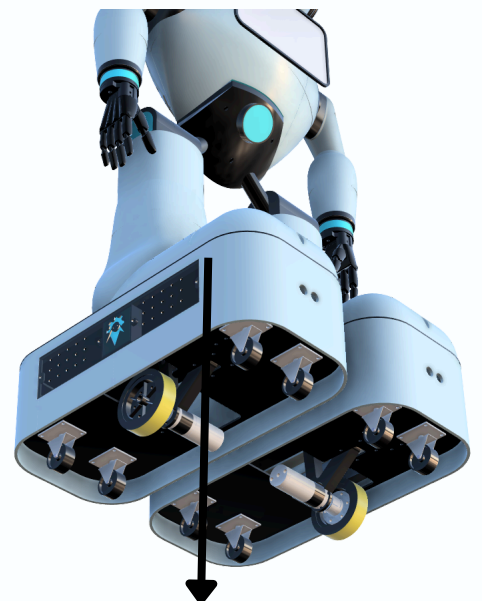
MOTORIZED MOVEMENT



BOTTOM PORTION



OBSTACLE AVOIDINGd SENSOR



BATTERY & CONTROL UNIT

1. Overview

Aurra Bot is a smart, multipurpose robotic assistant designed for seamless RC and App control. It features an integrated display for interactive Q&A, educational support, and custom admin content including advertisements.

2. Highlights

- **Dual-mode control:** RC Remote & Wi-Fi Mobile App
- **Interactive display** for educational & customized content
- **Admin Web Panel** for live updates & management
- **Battery meter** showing voltage & capacity
- **Powered by a 25.9V/31.5Ah Li-ion battery** for long runtime

3. Control Methods

A. RC Mode

- 2.4 GHz controller with dual joysticks
- Real-time direct manual control
- Head Movement

B. Wi-Fi App Mode

- Joystick & speed slider in user-friendly interface
- Connect to bot-hosted hotspot
- Head Movement

C. Admin Panel

- Access via browser to manage display questions and content
- Password-protected login

4. Power Specifications

Component	Specification
Lithium Ion	25.9V / 31.5Ah Li-ion
Charger	29.4V / 5A
Input	Universal 3-pin AC plug
Battery Display	Voltage & Capacity LED meter

5. Getting Started

A. Powering Up

1. Locate **POWER ON/OFF** switch at the back
2. Ensure battery is above **20.5V**
3. Press the switch to power ON
4. Operating range: up to 900 meters

B. Using RC Control

1. Insert 4 AA batteries into RC unit
2. Toggle RC switch to ON
3. Green LED and sound signal pairing mode
4. Push left joystick down until LED/sound stop - pairing complete
5. **Control mapping:**
 - Right joystick ↑: Move forward
 - Right joystick ↓: Move backward
 - Left joystick ←: Turn left
 - Left joystick →: Turn right

C. Wi-Fi App Control

1. Download app from provided link
2. Open the app; top-right icon shows red if disconnected
3. On your phone, connect to:
 - **SSID:** Aurra_Bot
 - **Password:** RBM@2025
4. Once connected, app icon turns green
5. Use on-screen joystick/arrows and speed slider
6. **App control operates within Wi-Fi range** - maintain proximity to the bot for optimal connectivity and responsiveness

D. Admin Panel Access

1. Click the link to access the admin interface: <https://auraa-admin.vercel.app/>
2. **Log in:**
 - Username: aurra
 - Password: RBM@2020
3. Update bot content, questions, and display settings

6. Safety Guidelines

- Always use the provided **29.4V / 5A charger**
- Avoid contact with water or heat sources
- Do not operate if battery is under **20.5V**
- Supervise during operation in public areas
- **Operate only on flat, stable surfaces**
- **Do not manually pull or drag the bot while it is powered on** - this can damage the motors

- **Do not give multiple commands simultaneously** - allow each operation to complete before issuing the next command
- **Do not manually rotate the hand or head mechanisms** while the bot is powered on and energized
- **Do not modify display or software settings** on either the head display or main display without proper authorization
- **Do not open the bot's back doors** (both head and main back door) without proper knowledge and authorization
- **Do not turn on or control the bot while it is charging**

7. Troubleshooting

Problem	Possible Cause	Recommended Action
Bot not powering on	Battery is drained	Recharge and check LED meter
RC not connecting	Binding step missed	Re-do joystick binding sequence
No Wi-Fi signal	Hotspot not active	Ensure bot is ON and hotspot is initialized
Display is frozen	Software hiccup	Power cycle via the main switch